



# PRODUCTS

/ 2016 - 2017

office sitting furniture



**ER1** / TE 1301



**ER1** / TE 1303



TE 1322



TE 1325

## TEA



**STF** / FX 1101.088.029



**SELF** / FX 1112.099



**ST1** / FX 1103.088



**ST1** / FX 1113.088.029

## FLEXI



**ST1** / FX 1104.083



**ST1** / FX 1104.083



**ST1** / FX 1114.083



**SELF** / FX 1106.082

## FLEXI



FX 1161



**SW2** / FX 1172



**SW2** / FX 1163



FX 1174

## FLEXI





**ST4** / FU 650A.088.015



**SW+** / FU 662B.093



FU 654A



FU 655A

< **FUTURA**



**ST4** / FU 3121.088.015



**ST4** / FU 3121.088.015



**ST4** / FU 3121.088



**ST4** / FU 3121.088

< **FUTURA 150**



**STE+** / JT 710.088.013



**STE+** / JT 710.088.013



**STE+** / JT 710



**STE+** / JT 711.088

< **JET**



**STE** / FL 741.088.014



**STE** / FL 741.088



FL 750E 



FL 760E 

< **FLASH**



**ST1** / FO 642C.083.024



FO 646A 



FO 647E 



FO 649E 

## FOCUS



**SELF** / AT 988.099



**ST1** / AT 985A.083



**ST** / AT 986A.082



AT 983 

## ANATOM



**ST1** / EP 1204.083



**SELF** / EP 1206L.083



EP 1224 



EP 1222L 

## EASY PRO



**STE** / NT 675.088.028



**ST1** / NT 676A.083



NT 682 



NT 685.044 

## NET





RO 941 



RO 942.044 



RO 952.044 



RO 953 



## RONDO



SW+ / KV 151



SW+ / KV 152.045



SW+ / KV 153.045



KV 1120



## KVADRATO



KV 131 



KV 133.045 



KV 142 



KV 143.045 



## KVADRATO



RW 2101 



RW 2102.043 



RW 2107 



RW 2108.043 



## REWIND



WB 950.000 



WB 950.002 



WB 950.010 



WB 950.300

## WEB



WB 950.101 



WB 950.110 



WB 950.111 



WB 950.302

## WEB



LT 161 



LT 162 



LT 163 



LT 164 

## LETTY



LT 166 



LT 167 



LT 168 



LT 169 


## LETTY





SI 4101 



SI 4102 



SI 4103 



SI 4104 

< **SITTY**



SI 4111 



SI 4112 



SI 4113 



SI 4114 

< **SITTY**



ER / PP 230



PP 231 



PP 232 



PP 6420

< **POPPY**



PP 238 



PP 237 

< **POPPY**



MO 5031



MO 5032



MO 5033

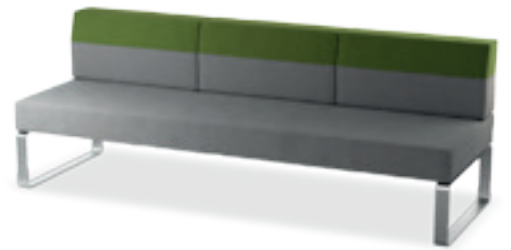
**MODULAR** >



MO 5041



MO 5042



5043

**MODULAR** >



MO 5041.030



MO 5042.030



MO 5041.021

**MODULAR** >



MO 5427



MO 5421



MO 5422



MO 5423

**MODULAR** >





MO 5061

MO 5062

MO 5074

MO 5073

< MODULAR 2



MO 5071.000

MO 5072.000

MO 5082

< MODULAR 2



MO 5431

MO 5432

MO 5433

MO 5436

< MODULAR 2



BOX 6

BOX 4

MO 5445

MO 5447

< MODULAR 2



AN 865.06



AN 865.01



AN 865.02

## ANET



TA 860.06



TA 860.01



TA 860.02



TA 860.05

## TANIA



IR 855.01



IR 855.01



IR 855.02

## IRIS



MV 7761



MV 7762



## MOVE





KI 5101



KI 5101



**KIVOS**



BS 431



BS 432



BS 433



**BRISK**



AL 831



AL 832



AL 833



**ALETA**



CB 311 N



CB 321 N



CB 312 N



CB 322 N



**CLUB**



WT 5461



WT 5462

## TABLES



LT 864



IR 856.01



IR 856.02



TA 861.01

## TABLES

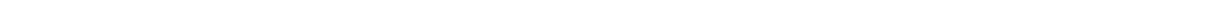


AL 803



KI 5418

## TABLES





AD 5450



AD 5460

---

< **ADJUST**



UN 801A



UN 802A

---

< **UNION**



KS 361.02



KS 361.01

---

< **SYMPOZIUM**

---



MU 420



MU 420

## MULTI



CP 0410



CP 0410

## CLAP



TU 890.01



TU 890.01



TU 890.02



TU 890.02

## TIP-UP





**ER / AG 695A**



**ER / AG 696A**



**AG 697N** 

< **ALLEGRO**



**ST1 / AD 971A.083.026**



**ST1 / AD 971A.083**



**ST2 / AD 973.082**

< **ADAPT**



**ST 5 / EP 1207.083**



**ST 5 / EP 1207.083**



**ST 5 / FO 641F.082**



**ST 5 / FO 641F.082**

< **EASY/FOCUS**



**ST2 / ZE 920.083.027**



**ST3 / ZE 919.082**



**ST3 / ZE 916A.082**



**PC / ZE 915.073**

< **ZET**



SP 2141.061 




SP 2141 

## SPRING



EM 550 



EM 570.031 



EM 564 



EM 5520

## ECONOMY



PU 243 



PU 244 

## PULL



WO 227 



WO 228 



WO 229 



WO 229 

## WOODY







# FABRICS

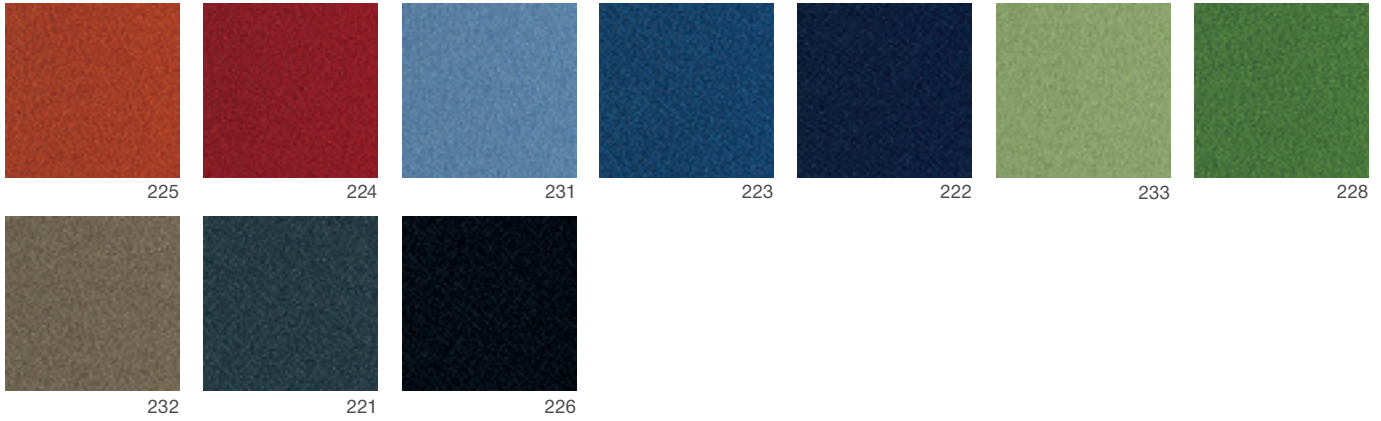
/ 2016 - 2017

office sitting furniture

# P/BONDAI



100% polyester / Abrasion resistance 150.000 Martindale /  
Flammability EN 1021-1, EN 1021-2, Crib 5 (BS 5852 part II,  
BS 7176 : 1995 Medium Hazard)



# A/ERA



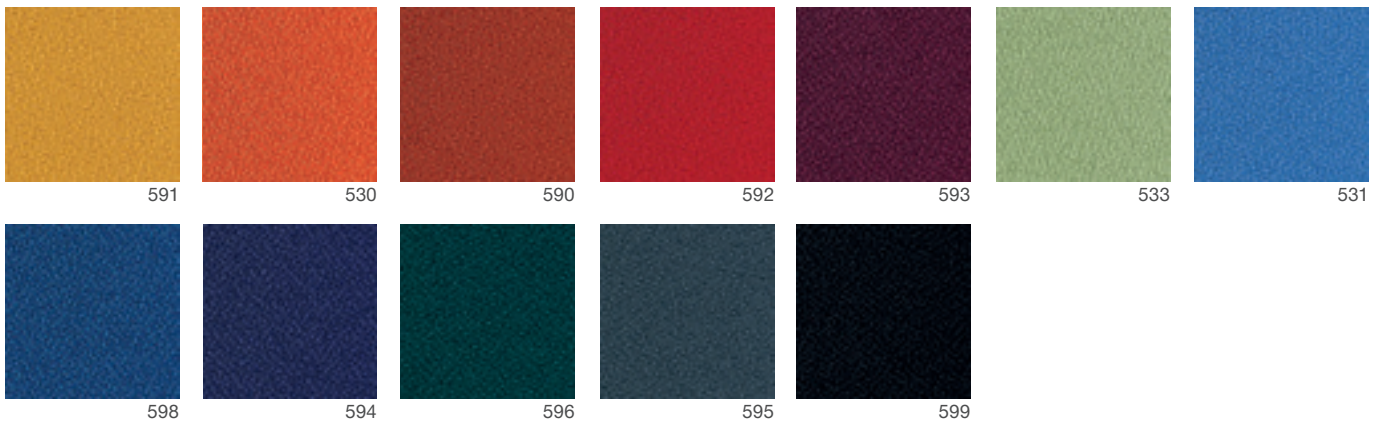
100% polyester / Abrasion resistance 100.000 Martindale /  
Flammability BS EN 1021 - 1:2014, BS EN 1021 - 2:2014, BS 7176:2007 Low Hazard



# A/PHOENIX



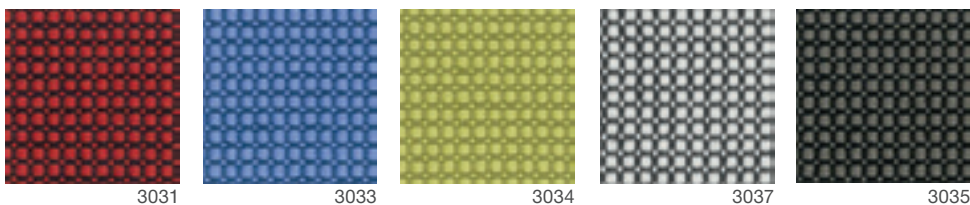
100% polyester / Abrasion resistance 100.000 Martindale /  
Flammability EN 1021 - 1 - 2:2014, BS 7176 : 2007 Low Hazard



# B/RELAX BICO



100% polyester Trevira CS / Abrasion resistance  
100.000 Martindale / Flammability EN 1021/1 - 2,  
BS 7176 : 1995 medium hazard





5

YEAR GUARANTEE



100% recycled polyester / Abrasion resistance 100.000  
Martindale / Flammability EN 1021 - 1:2014, EN 1021 -  
2:2014, BS 7176 : 2007 Medium Hazard, BS 7176 : 2007  
Low Hazard, BS 5852:2006 Section 4 Ignition Source 5



# URBAN PLUS/B



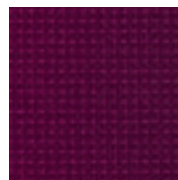
3008



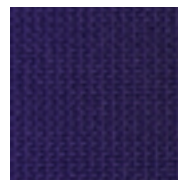
3005



3006



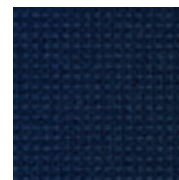
3009



3010



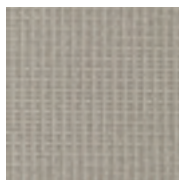
3011



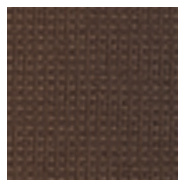
3004



3003



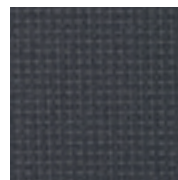
3012



3013



3001



3002



3007



10

YEAR GUARANTEE

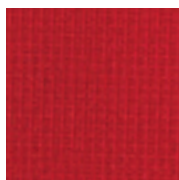
95% Wool, 5% Polyamide / Abrasion resistance 200.000 Martindale /  
Flammability BS EN 1021 1&2, BS 5852 Crib 5, 7176 Medium Hazard



# FAME/C



4150



4151



4170



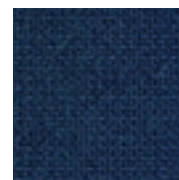
4153



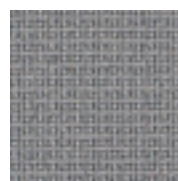
4169



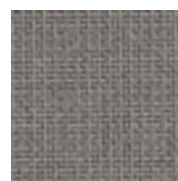
4154



4155



4168



4166



4159



10

YEAR GUARANTEE



100 % Trevira CS / Abrasion resistance 100.000 Martindale /  
Flammability EN 1021 1&2, BS 5852 Part 1 0, 1, BS 5852 Crib 5,  
BS 7176 Medium Hazard



# STEP/C



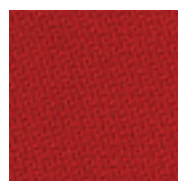
4207



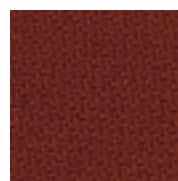
4208



4217



4209



4205



4206



4210



4213



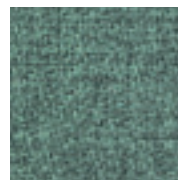
4214



4211



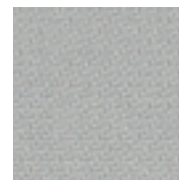
4212



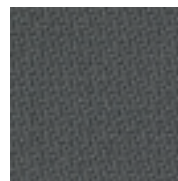
4215



4204



4216



4202



4203



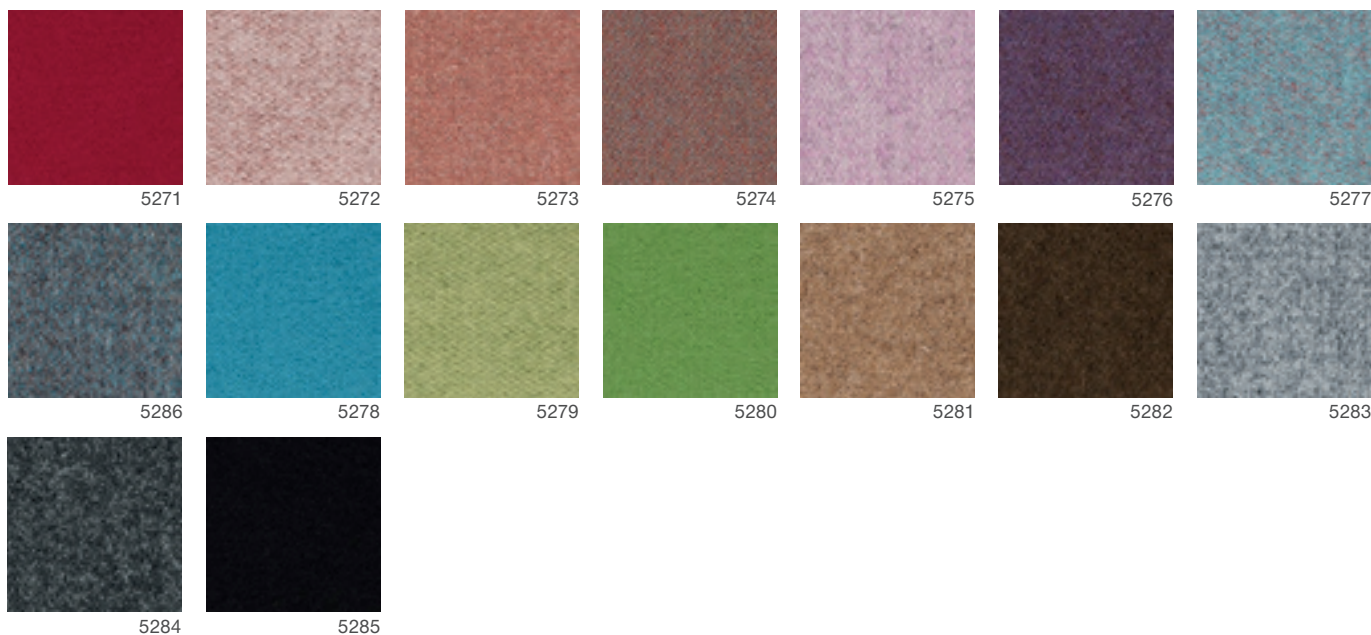
4201

# D/SYNERGY



95% Virgin Wool, 5% Polyamide / Abrasion resistance 100.000  
Martindale / Flammability EN 1021 - 1, EN 1021 - 2,  
BS 7176 low hazard, UNI 9175 class 1 im

5  
YEAR GUARANTEE



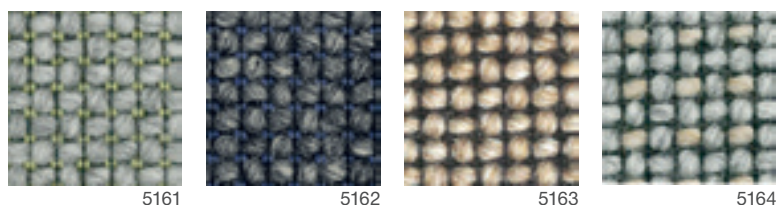
# D/CRAGGAN



100% Virgin Wool / Abrasion resistance 50.000 Martindale /  
Flammability EN 1021-1, EN 1021-2, BS 7176 Low Hazard, BS 5852  
Section 4 Ignition Source 5, BS 7176 : 2007 Medium Hazard



10  
YEAR GUARANTEE

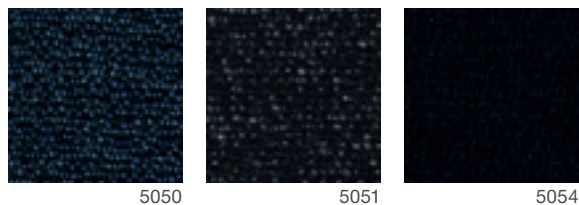


# D/24/7+



50% Polyamid, 33% wool, 10% visil, 7% viscose / Abrasion resistance 400.000  
Martindale / Flammability EN 1021 - 1:2014, EN 1021 - 2:2014,  
BS 7176 : 2007 Low Hazard, BS 5852:2006, BS 7176 : 2007 Medium Hazard

10  
YEAR GUARANTEE

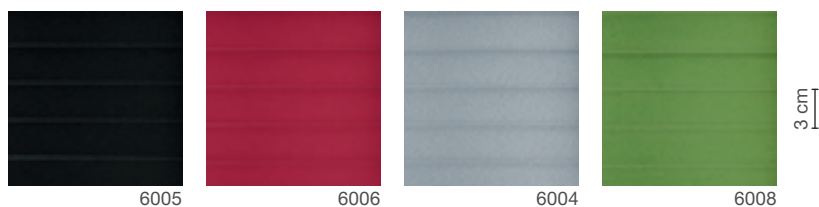


# EASY PRO LINE



100% polyester / Abrasion resistance 150.000 Martindale

5  
YEAR GUARANTEE



**K+R 482 / 99 % Polyester, 1 % Elasthan /  
Flammability: DIN EN 1021:2006 part 1**

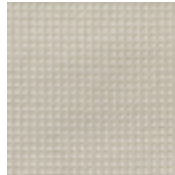


## MESH

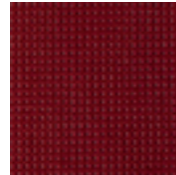


K+R 482

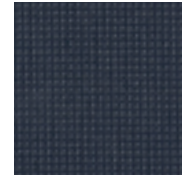
**K+R / 97% Polyester, 2% Polyamid, 1% elasthan  
/ Abrasion resistance 30.000 Martindale**



K+R 424



K+R 426

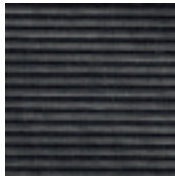


K+R 425

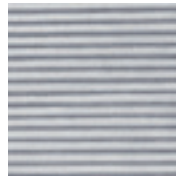


K+R 410

**RIB / 34% Polyester, 58% Polyamid, 8% Polyacryl  
/ Abrasion resistance 150.000 Martindale,  
Flammability: DIN EN 1021:2014-01 part 1**



RIB 431



RIB 432



RIB 433

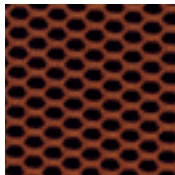


RIB 434

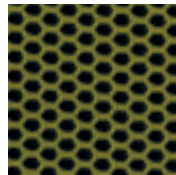


**10**  
YEAR GUARANTEE

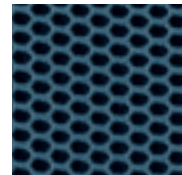
**OMEGA / 100% Polyester / Abrasion  
resistance 100.000 Martindale /  
Flammability BS EN 1021 1&2,  
BS 5852 Part 1 0, 1**



omega 471



omega 472



omega 473

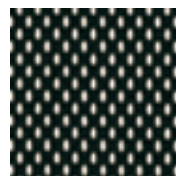


omega 474

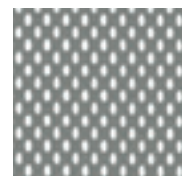
**POLO / 100% Polyester / Abrasion  
resistance 100.000 Martindale /  
Flammability BS EN 1021-1**



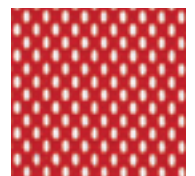
## MESH



polo 451



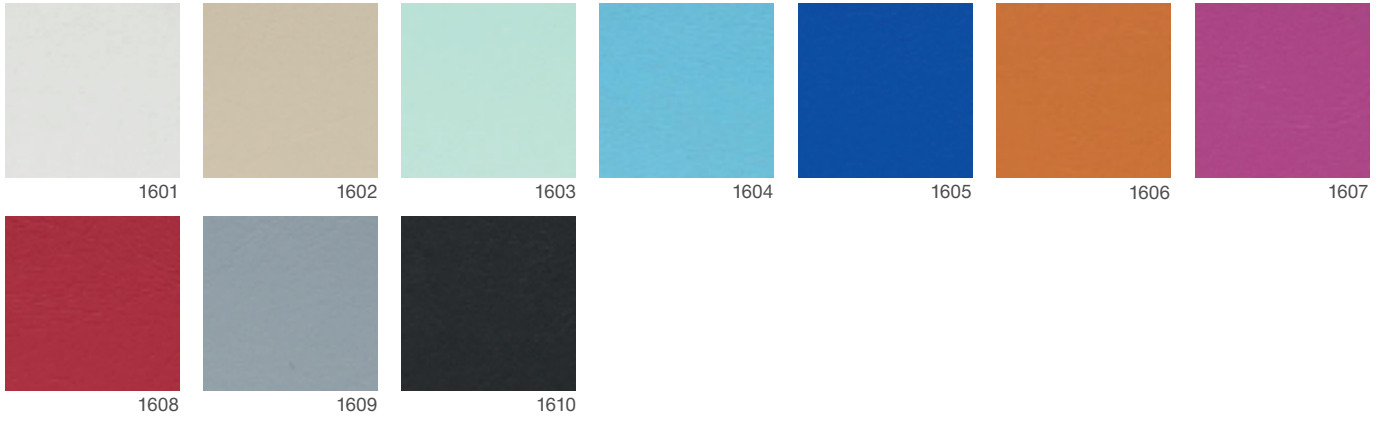
polo 455



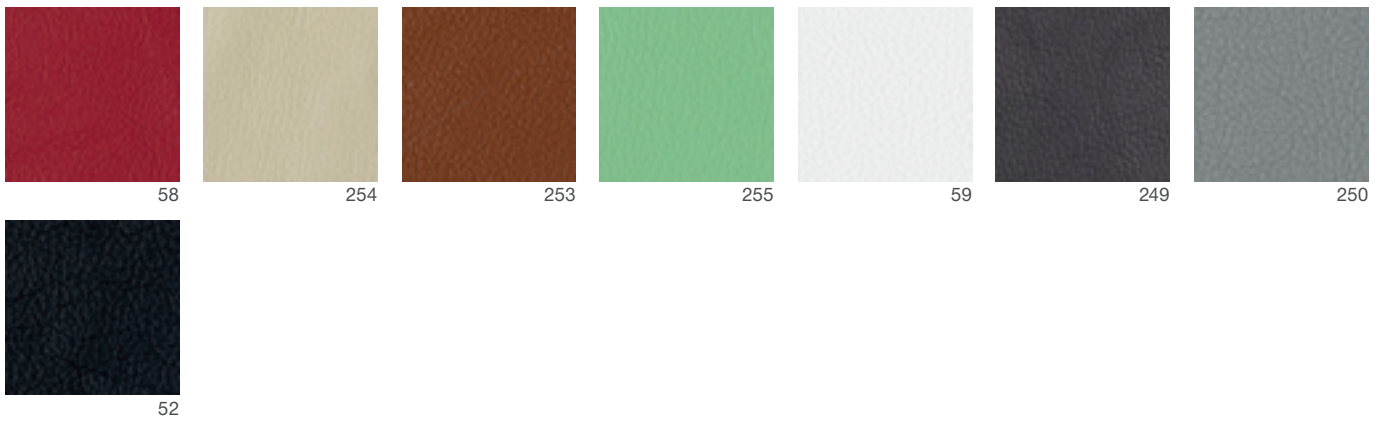
polo 456

PVC - coating 88% polyester/viscose 12% / Abrasion Resistance 100.000  
Martindale / Flammability DIN EN 1021 - 1+2, FMVSS 302 / UV-resistance acc.  
DIN EN ISO 105 B02, saltwater-resistance acc. DIN EN ISO 105 E02,  
resistance to chlorinated water, ÖKO TEX Standard 100

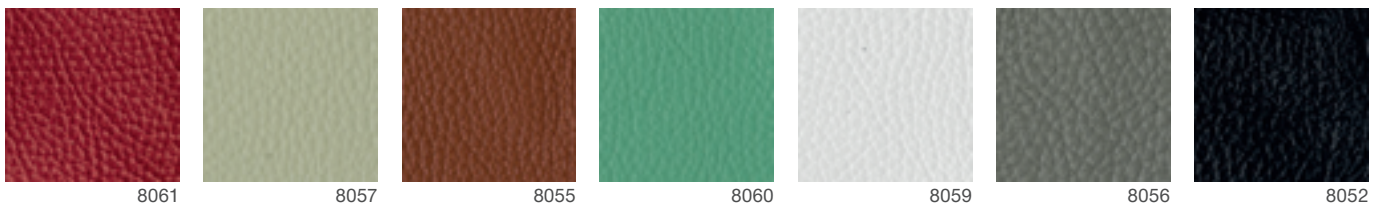
## B/**PISA**/lederimitation



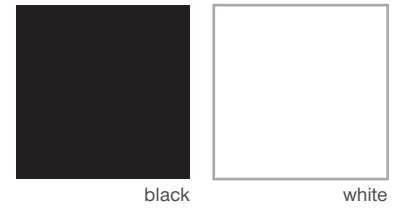
## **PRINCE**/leather



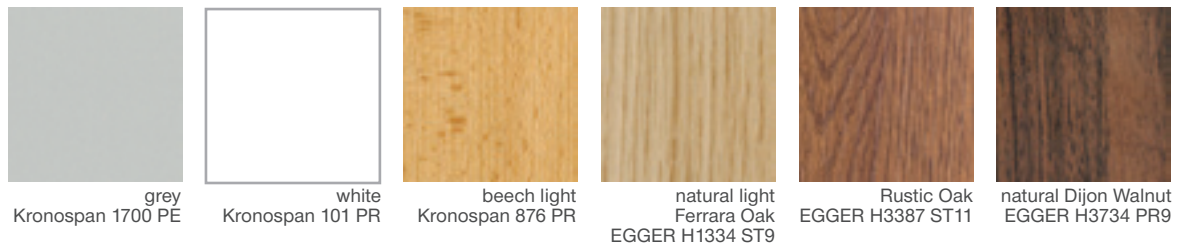
## **FLORIDA**/leather



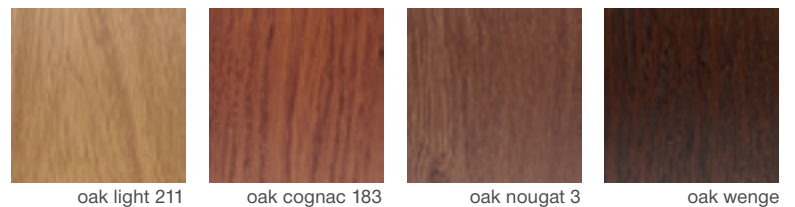
## LAMINATE






## TABLE TOPS LAMINATE



## TABLE TOPS VENNER



-  Kancelářské židle / Drehstühle / Swivel chairs
-  Konferenční židle / Konferenzstühle / Conference
-  Sedačky / Warten-Empfangen / Waiting-Reception

**CZ** Barevná přesnost může být zaručena pouze dle originálních vzorků látek a dekorů. Barevné vzory látek a dekorů použité v tomto vzorníku jsou tištěné reprodukce, které se mohou lišit od originálních barev a nejsou proto důvodem k reklamaci.

**D** Farbverbindlichkeit kann nur bei Originalmustern gewährleistet werden. Farbabweichungen zum originaleem Bezugsstoff sind drucktechnisch bedingt und bieten keinen Anlass zu Reklamationen.

**GB** Colour accuracy can be guaranteed only when original samples. Differences in colour compared to the original fabrics are unavoidable in printed catalogues and do not constitute grounds for complaint.



**Rim**<sup>®</sup>  
www.rim.cz