

Group	II	III
Fabric	MEDLEY ATLANTIC VITA	XTREME BLAZER

TECHNICAL DESCRIPTION

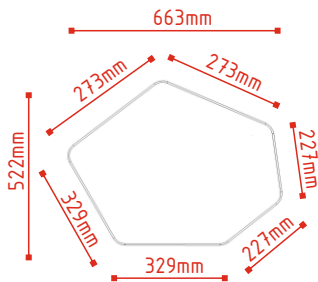
The structure of body made of chipboard 18mm, 28mm and HDF 3mm, screwed together with confirmates.

Body covered with upholstery foam: seat 50mm thick, sides 10mm.

Plastic feet \varnothing 30mm, 6 pcs, adjustment range 15mm.

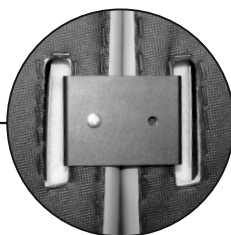
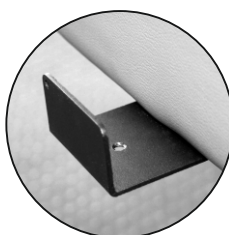
Poufs connected with metal binding elements made of laser-cut profile 2mm, powder coated, black.

DIMENSIONS



BPN1
12 kg
 gross
 D / W / H
 700/550/490

BPW1
17 kg
 gross
 D / W / H
 700/550/790

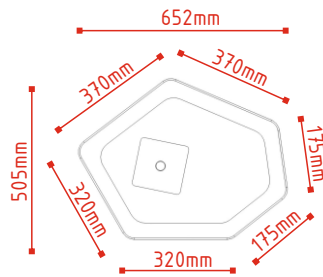


Top Colours	WHITE PASTEL
Frame Colours	WHITE GLOSS

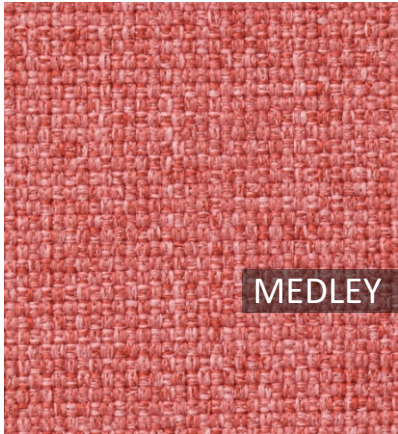
TECHNICAL DESCRIPTION

Top – mass-dyed HPL, 10mm thick, white pastel
 Frame- a vertical column made of a pipe Ø30mm, wall thickness 1,5mm.
 Basis made of sheet metal 5mm thick. A powdercoated frame in white gloss.

DIMENSIONS



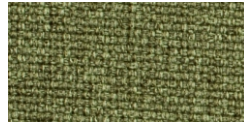
B01S
 12 kg
 gross
 D / W / H
 672/525/695



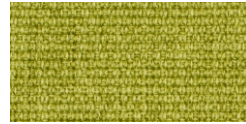
MEDLEY

GROUP II

M-63064



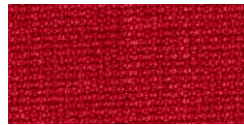
M-68005



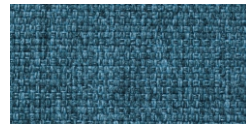
M-68002



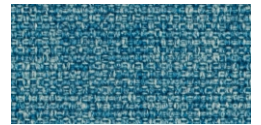
M-68115



M-64019



M-67053



M-67006



M-60999



M-66008

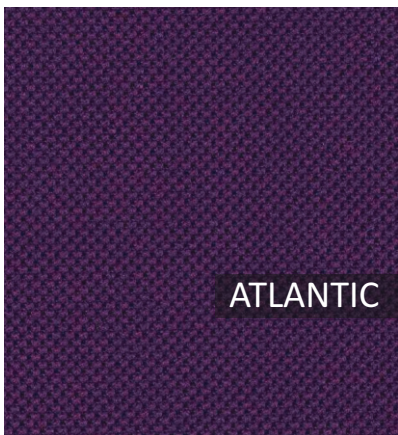


M-61002

Technical data

Material
Fabric weight/lm
Abrasion resistance rubs
Pilling resistance
Colour fastness to light
Colour fastness to rubbing
Acoustic test sound absorption
Flammability

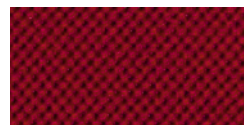
polyester 100%
 510 gr/lm
 75,000 Martindale cycles
 Scale 1-5, max. 5 - EN ISO 12945-2 4
 Scale 1-8, max. 8 - EN ISO 105-B02 5-7
 Scale 1-5, max. 5 - EN ISO 105x12 (wet/dry) 4-5/4-5
 ISO 354
 BS EN 1021 - 1:2006 (cigarette), BS EN 1021 - 2:2006, California Bulletin CAL 117-E-Class 1,
 Class Uno UNI 9175 Class 1 | EMME CA TB 117-2013



ATLANTIC

GROUP II

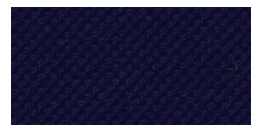
A-65037



A-64089



A-67043



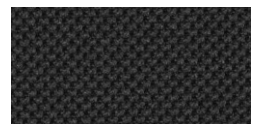
A-66064



A-62048



A-67030



A-60025



A-61078



A-60141



A-60011

Technical data

Material
Fabric weight
Abrasion resistance rubs
Colour fastness to light
Colour fastness to rubbing
Flammability

polyester 100%
 530 gr/lm
 110,000 Rubs Martindale (EN ISO 12947-2)
 Scale 1-8, max. 8 - EN ISO 105-B02 5-7
 Scale 1-5, max. 5 - EN ISO 105x12 (wet/dry) 4-5/4-5
 ASTM E 84, BS 476 Part 7, class 1, BS EN 1021-1 cigarett, BS EN 1021-2 Match, CA TB 117-2013,
 Class Uno UNI 9175 Class 1 | EMME NF P 92-503 M3



VITA

GROUP II

V-23



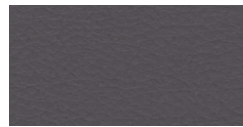
V-01



V-02



V-03



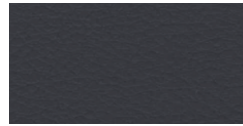
V-04



V-06



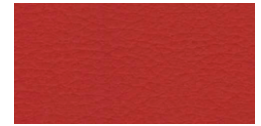
V-05



V-07



V-15



V-08



V-18



V-19

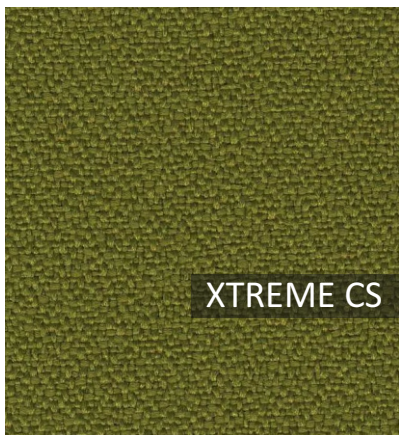


V-20

Technical data

- Material**
- Fabric weight**
- Abrasion resistance rubs**
- Flexes**
- Anti-microbial/ Anti-fungal**
- Flammability**

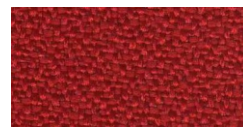
Surface: 98.5% PVC, 1.5% PU, Substrate: 50%, Polyester 50% Cotton
 850g/m2 ±10% (1190G/lin. m ±10%)
 100,000 Martindale cycles, BS EN ISO 5470-2:2003
 BS EN ISO 7854:1997 Method B, 400,000 Flexing cycles
 AATCC 147:2011
 BS EN 1021 - 1:2016 (cigarette), BS EN 1021 - 1:2016 (match),
 BS 5852:2006 Section 4 Ignition Source 5, BS 7176:2017 Medium Hazard,
 NF P 95 503 M2, FMVSS 302 (ISO 3795)



XTREME CS

GROUP III

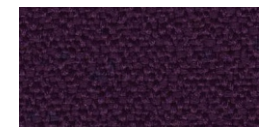
XR420



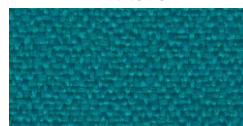
XR079



XR026



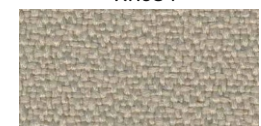
XR084



XR160



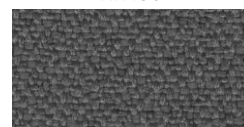
XR430



XR108



XR094



XR081



XR009

Technical data

- Material**
- Fabric weight**
- Abrasion resistance rubs**
- Colour fastness to light**
- Colour fastness to rubbing**
- Flammability**

100% Trevira Clame CS® Flame Retardant, Polyester, Non metallic dyestuffs
 310g/m2 ±5% (435g/lin.m ±5%)
 60,000 Martindale cycles
 6 (ISO 105 - B02)
 Wet: 4, Dry: 4 (ISO 105 - X12)
 EN 1021 - 1 (cigarette), EN 1021 M - 2 (match), BS 7176 Low Hazard,
 NF P92-507 M1, DIN 4102 B1, UNI 9175 Classe 1 IM, UNI 8456,
 UNI 9174 & UNI 9177 Classe Uno, ÖNORM B 3825 & A 3800 -1, NF D 60-013



GROUP III CUZ1R



CUZ63



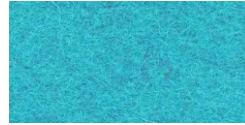
CUZ39



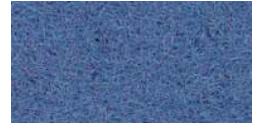
CUZ1L



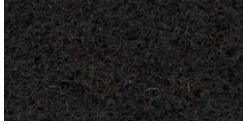
CUZ1X



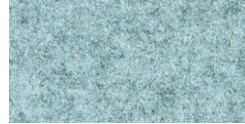
CUZ02



CUZ1V



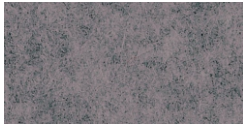
CUZ12



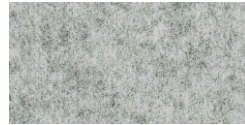
CUZ1R



CUZ47



CUZ1G



CUZ28

Technical data

Material	100% Virgin wool
Fabric weight/1m	460 gr/m ²
Abrasion resistance rubs	50,000 Martindale cycles
Colour fastness to light	ISO 105 - B02:2013 5
Colour fastness to rubbing	ISO 105 - X12:2002 (wet/dry) 4
Flammability	BS EN 1021 - 1:2006 (cigarette), BS EN 1021 - 2:2006 (match), BS 7176:2007, UNI 9175 Classe 1 IM, ÖNORM B 3825 & A 3800-1

