



Alcuni
Rivestimenti

Some
Upholsteries

- Colori, tessuti e pelli fotografati sono indicativi
- Colours, fabrics and leathers photographed are indicative

AVVERTENZE GENERALI

I colori chiari, non devono essere messi a contatto con tessuti e capi d'abbigliamento trattati con coloranti non fissati, o con scarse solidità di tintura, onde evitare macchie ed aloni di coloranti di cui non possiamo garantire la pulitura.

GENERAL WARNINGS

To avoid permanent stains, the lighter colours of the article should not be brought into contact with textiles and clothing unfixed dyes. We cannot guarantee the ability to remove unknown dyes from light coloured product.

A

Categoria
Category

PLANET
Resistenza alla fiamma - Fire resistance
Certificato Classe 1 UNI 9175 CL. 1 IM
87,5% P.V.C. plastificato - 12,5% cotone
(Martindale 100.000)



PLANET



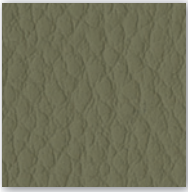
A 31 F



A 32 F



A 29 F



A 37 F



A 28 F



A 30 F



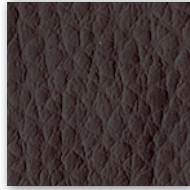
A 35 F



A 26 F



A 34 F



A 38 F



A 39 F



A 36 F



A 27 F

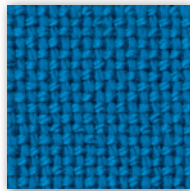
B

Categoria
Category

Tessuto altamente ignifugo
Certificato Classe 1
Ministero dell'Interno
Fireproof fabric - Tissu non feu
Brandfester Bezug - Tela ignifuga
100% polipropilene FR - Polypropylene FR
(Martindale 80.000)



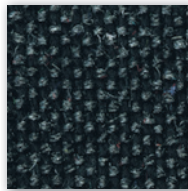
B 251



B 264



B 259



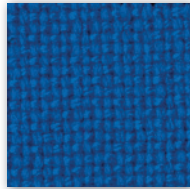
B 267



B 266 (Dark brown)



B 262



B 263



B 265



B 254

C

Categoria
Category

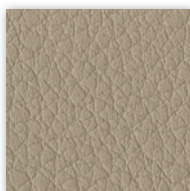
SKILL/SECRET
Resistenza alla fiamma - Fire resistance
Certificato Classe 1 UNI 9175 CL. 1IM - EN 1021 - BS 5852
69% P.V.C. plastificato - 30% cotone - 1% poliuretano
(Martindale 50.000)



SKILL



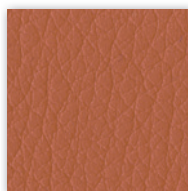
C 40 F



C 41 F



C 42 F



C 43 F



C 44 F



C 45 F



C 46 F



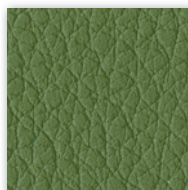
C 47 F



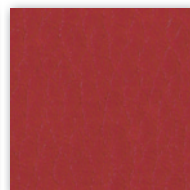
C 48 F



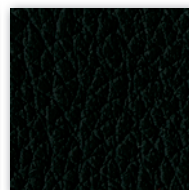
C 49 F



C 50 F



C 51 F



C 52 F



Categoria
Category

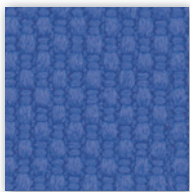
TREVI Tessuto altamente ignifugo
Certificato Classe 1 Ministero dell'Interno
Fireproof fabric - Tissu non feu
Brandfester Bezug - Tela ignifuga
100% Poliestere Trevira CS
(Martindale 70.000)



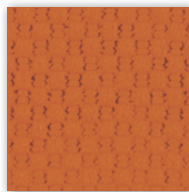
C 381



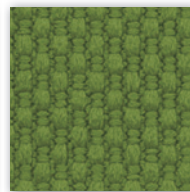
C 38 T



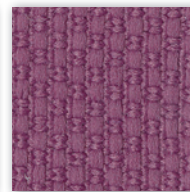
C 383



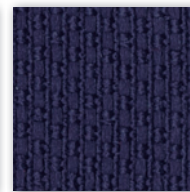
C 380



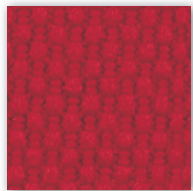
C 385



C 38 L



C 38 H



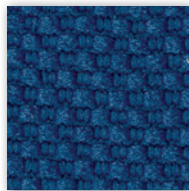
C 382



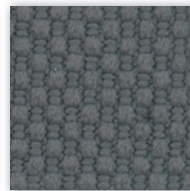
C 386



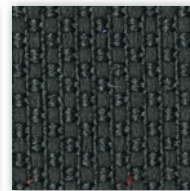
C 387



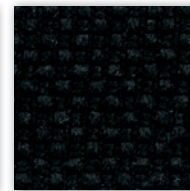
C-38



C 384



C 38 A



C 388



C 38 G



C 38 M



C 38 P

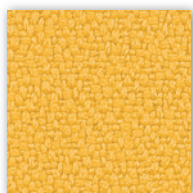


Categoria
Category

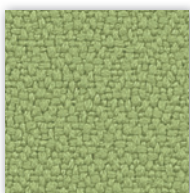
Tessuto altamente ignifugo
Certificato Classe 1 Ministero dell'Interno
Fireproof fabric - Tissu non feu
Brandfester Bezug - Tela ignifuga
100% Xtreme FR®
(Martindale 100.000)



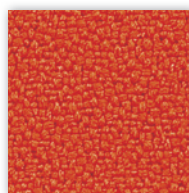
C 335



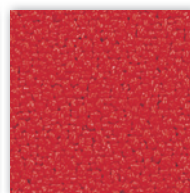
C 336



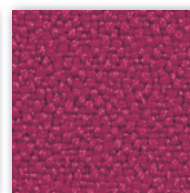
C 332



C 334



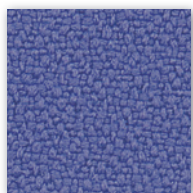
C 329



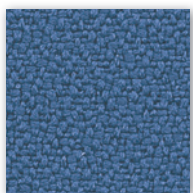
C 337



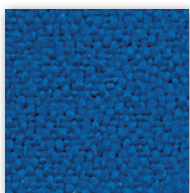
C 327 (Dark brown)



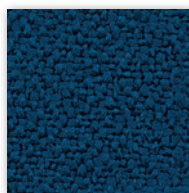
C 339



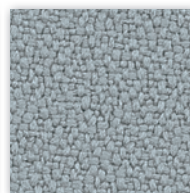
C 325



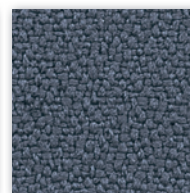
C 326



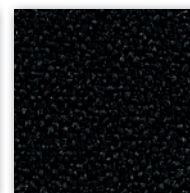
C 330



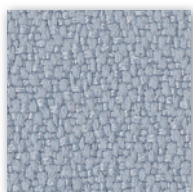
C 331



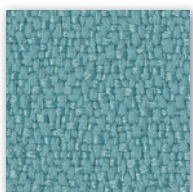
C 324



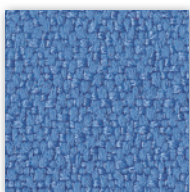
C 328



C 349



C 333

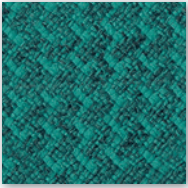


C 338

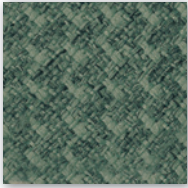
D

Categoria
Category

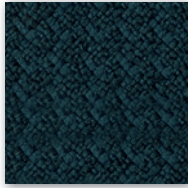
BOND Post consumer recycled polyester
98% - Polyester 2%
Flammability EN 1021 1&2
BS 5852 0&1 - CA TB 117-2013
(Martindale 100.000)



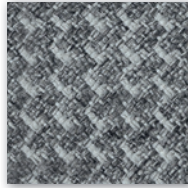
D 51B



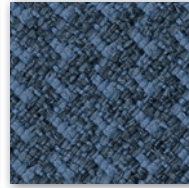
D 52B



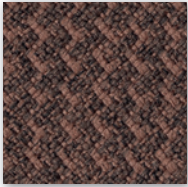
D 53B



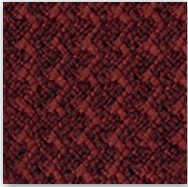
D 54B



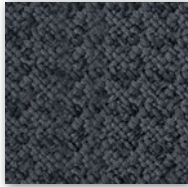
D 55B



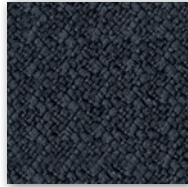
D 56B



D 57B



D 58B

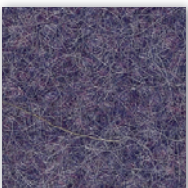


D 59B

D

Categoria
Category

Resistenza alla fiamma - Fire resistance
Certificato Classe 1 IM EN 1021 Part. 1-2
75% Lana - 25% Poliammide / 75% Wool - 25% Polyamide
(Martindale 100.000)



D 501



D 502



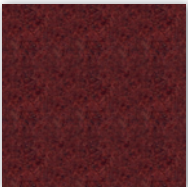
D 503



D 504



D 505



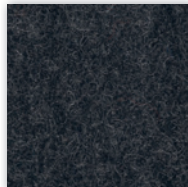
D 506



D 507



D 508

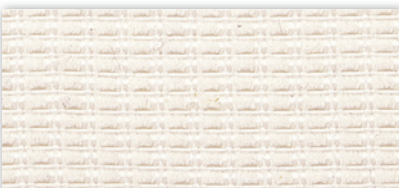


D 509

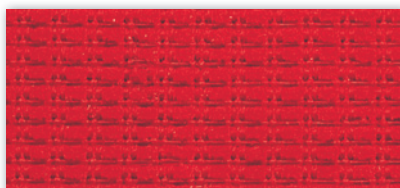
D

Categoria
Category

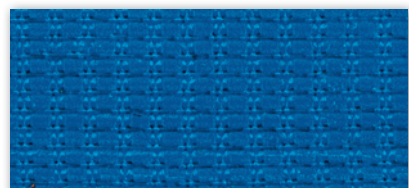
Rete - Mesh - Resille - Membran - Red
64% PL - 36% PA - Martindale 100.000



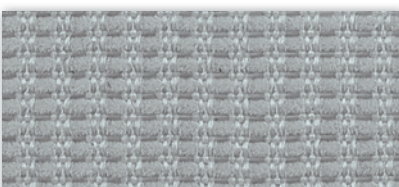
D 218



D 219



D 220



D 221



D 222

D

Categoria
Category

Trattamento antimicrobico - Antimicrobial treatment
Impermeabilità-Waterproof
Resistenza fiamma-Fire resistance
UNI 9175/87 CL.1IM - EN 1021 BS 5852
63% Poliuretano / Polyurethane - 29% Cotone - Cotton 8% PES
IMO A. 652
(Martindale 150.000)

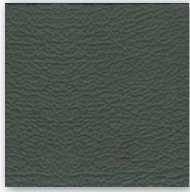

EXTREMA/AU
Ultra-Fresh*



D 420



D 426



D 430



D 427



D 431



D 421



D 423



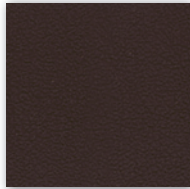
D 432



D 422



D 425



D 428 (Dark brown)



D 424



D 429

D

Categoria
Category

Resistenza alla fiamma - Fire resistance
UNI 9177 CL. 1 - UNI 9175 CL. 1IM - EN 1021-2
100% PES
(Martindale 60.000)


ESEDRA



D 450



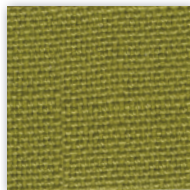
D 451



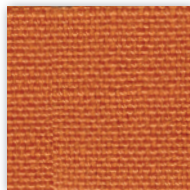
D 452



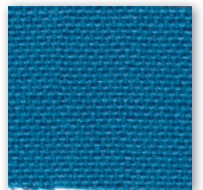
D 453



D 454



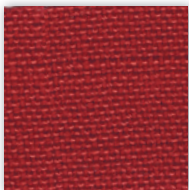
D 455



D 456



D 457



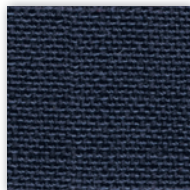
D 458



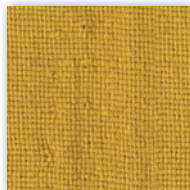
D 459



D 460



D 461



D 462

D

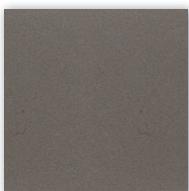
Categoria
Category

Trattamento antimicrobico - Antimicrobial treatment
Impermeabilità-Waterproof
Resistenza fiamma-Fire resistance
UNI 9175/87 CL.1IM - EN 1021 BS 5852
63% Poliuretano / Polyurethane - 29% Cotone - Cotton 8% PES
IMO A. 652
(Martindale 150.000)


EXTREMA IKON
Ultra-Fresh*



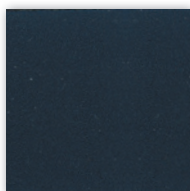
D 470



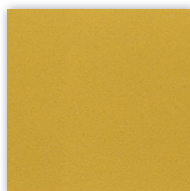
D 471



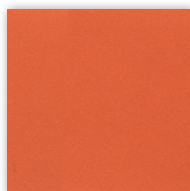
D 472



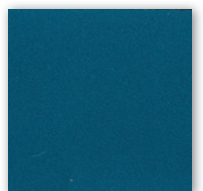
D 473



D 474



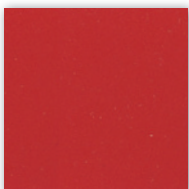
D 475



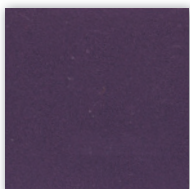
D 476



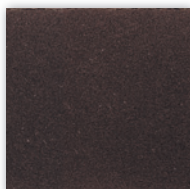
D 477



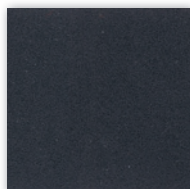
D 478



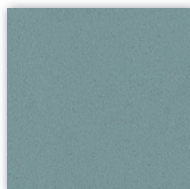
D 479



D 480 (Dark brown)



D 481

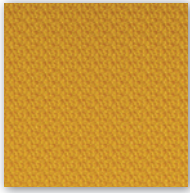


D 482

D

Categoria
Category

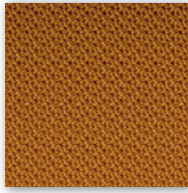
Tessuto ignifugo - Fireproof fabric - Tissu non feu - Brandfester Bezug - Tela ignifuga
Classe 1IM - DIN 4102 B2 - NF P 92-503/M2
100% Vinyl-compound - 100% Polyester Ultra Hi-Loft™ Backing
PERMABLOK® - SILVERGUARD® - Waterproof
(Martindale > 100.000)



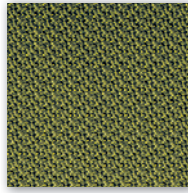
D 801



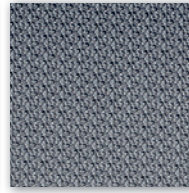
D 802



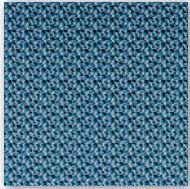
D 803



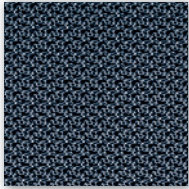
D 804



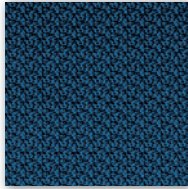
D 805



D 806



D 807



D 808



D 809

D

Categoria
Category

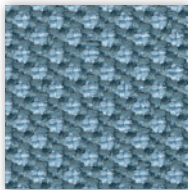
Material: 100% post consumer recycled poliester
Flammability: EN 1021 1&2 · BS 5852 0&1 Classe 1 · CA TB 117-2013.
Will also pass other flammability standards.
Flame retardant performance is dependent upon the foam used.
Abrasion resistance: rubs · EN ISO 12947-2 (Martindale 100.000)



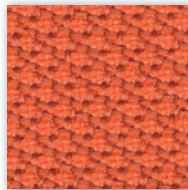
D 40R



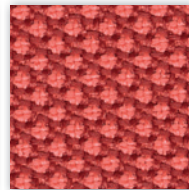
D 41R



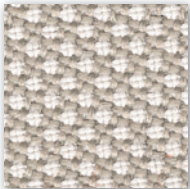
D 42R



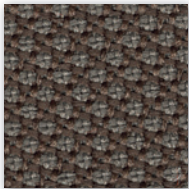
D 43R



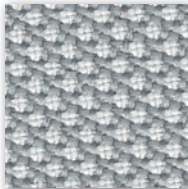
D 44R



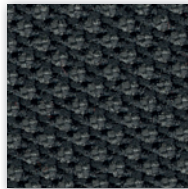
D 45R



D 46R



D 47R



D 48R

P

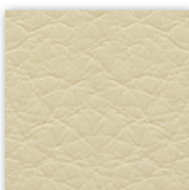
Categoria
Category

Vera pelle - Genuine leather
Cuir - Leder - Piel auténtica

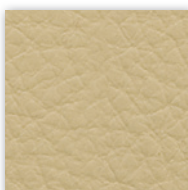
A richiesta disponibili altri colori.
By request any other colours available.



P 901



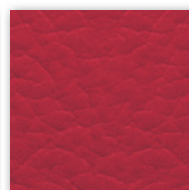
P 915



P 916



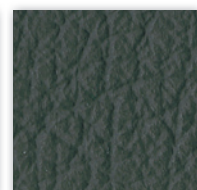
P 917



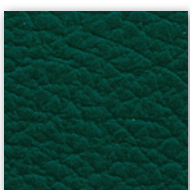
P 909



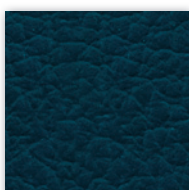
P 905



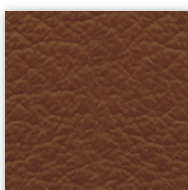
P 911



P 910



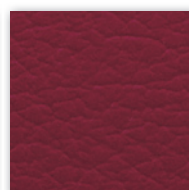
P 912



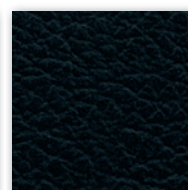
P 908



P 902 (Dark brown)



P 914



P 903